



JAVA HI-FI

Bringing Music Closer.

Now more than ever, the act of listening to music is one of life's simple pleasures. Music takes us on a journey, rewarding us with precious moments of escapism from the seemingly constant information overload we face in today's world. In pursuit of the intangible, soulful essence of music, JAVA Hi-Fi has created a range of amplifiers that deliver a deeply immersive listening experience, bringing the listener closer to the music.

**"Our aim is to bring music lovers
closer to the music than ever before."**

JAVA HI-FI FOUNDER — MARTIN BELL





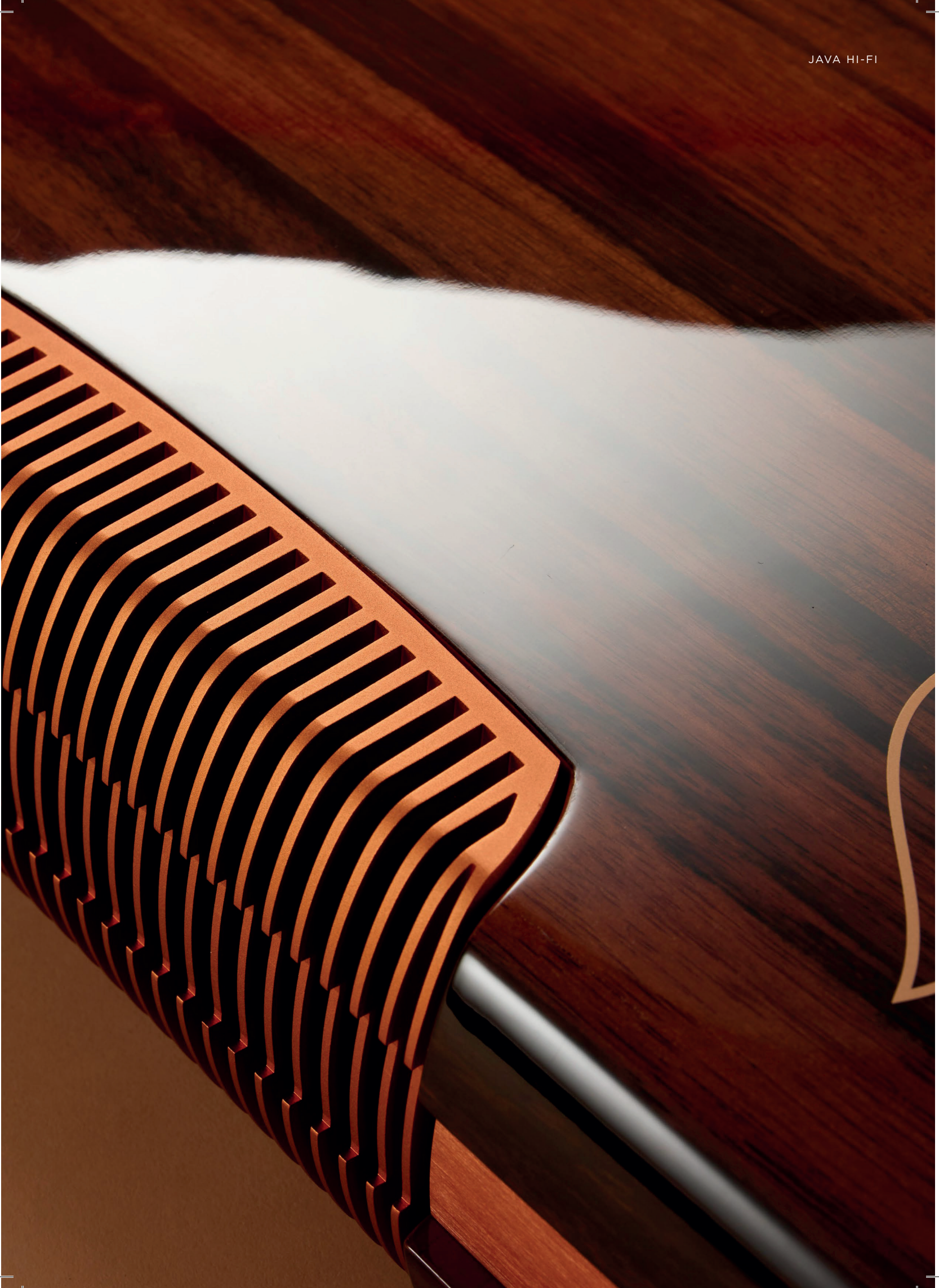
JAVA HI-FI



Beautiful Music.

The JAVA Hi-Fi range of audio components reproduce music with extraordinary realism. Subtle new details are revealed in familiar pieces of music, while voices and instruments are presented with a rich and life-like tone. Music flows effortlessly from the speakers, enveloping the listener in a broad and deep soundstage that takes you direct to the heart of the musical performance.

Although exceptional audio performance is at the core of the JAVA Hi-Fi range, it is the unique combination of cutting-edge technology and clean uncluttered aesthetics, that truly sets JAVA Hi-Fi apart.





JAVA HI-FI



With a feature-set perfectly tailored to the demands of the discerning audio enthusiast, the six-strong range of JAVA Hi-Fi amplifiers is available in 'Single Shot' or 'Double Shot' strengths.

WORLD FIRST #1

First audiophile integrated amplifier to use GaN FET (Gallium Nitride) transistors.

WORLD FIRST #2

First audio product to include LDRs (light dependent resistors) and GaN FET transistors in the same circuit.

'SINGLE SHOT' INTEGRATED AMPLIFIER

- 200 watts/8 ohms
- LDR pre-amp stage and GaN FET power amp stage
- 2 x pairs of RCA line-level inputs
- 1 x pair of RCA outputs (pre-out)
- High-resolution DAC (USB input)
- MM phono stage (RCA inputs)
- Bluetooth aptX
- 1 x headphone output
- Remote control for volume and source selection
- ETI Research RCA connectors
- ETI Research speaker binding posts
- Solid 4mm anodised aluminium front panel
- CNC-machined solid beech outer case with luxury real wood veneers
- Innovative inverted PCB assembly for vibration and resonance control of the audio circuit
- Dimensions: 44 cm x 41.5 cm x 13 cm (w/d/h)
- Weight: 9.5 kgs (21 lbs)



‘SINGLE SHOT’ LDR PRE-AMPLIFIER

- 5 x pairs of RCA inputs
- 2 x pairs of RCA outputs
- 1 x headphone output
- Remote control for volume and source selection
- ETI Research RCA connectors
- Solid 4mm anodised aluminium front panel
- CNC-machined solid beech outer case with luxury real wood veneers
- Innovative inverted PCB assembly for vibration and resonance control of the audio circuit
- Dimensions: 44 cm x 41.5 cm x 13 cm (w/d/h)
- Weight: 6.1 kgs (13.5 lbs)



‘SINGLE SHOT’ GaN FET STEREO POWER AMPLIFIER

- 200 watts/8 ohms
- 1 x pair of RCA line-level inputs (single-ended)
- 1 x pair of XLR line-level inputs (fully balanced)
- ETI Research RCA connectors
- ETI Research speaker binding posts
- Solid 4mm anodised aluminium front panel
- CNC-machined solid beech outer case with luxury real wood veneers
- Innovative inverted PCB assembly for vibration and resonance control of the audio circuit
- Dimensions: 44 cm x 41.5 cm x 13 cm (w/d/h)
- Weight: 8.2 kgs (18 lbs)



JAVA HI-FI



The new JAVA Hi-Fi Double Shot range features a fully balanced topology throughout, to eliminate cross talk and enhance channel separation.

'DOUBLE SHOT' INTEGRATED AMPLIFIER

- 400 watts/8 ohms
- LDR pre-amp stage and GaN FET power amp stage
- Fully balanced dual mono topology
- 4 x pairs of XLR line-level inputs
- 2 x pairs of XLR outputs (fixed and variable)
- High-resolution DAC (USB input)
- MM phono stage (RCA inputs)
- Bluetooth aptX
- 1 x headphone output
- Remote control for volume and source selection
- ETI Research speaker binding posts
- Solid 4mm anodised aluminium front panel
- CNC-machined solid beech outer case with luxury real wood veneers
- Innovative inverted PCB assembly for vibration and resonance control of the audio circuit
- Dimensions: 44 cm x 41.5 cm x 13 cm (w/d/h)
- Weight: 10.6 kgs (23.4 lbs)



‘DOUBLE SHOT’ LDR PRE-AMPLIFIER

- 7 x pairs of XLR inputs
- 3 x pairs of XLR outputs (1 x fixed, 2 x variable)
- 1 x headphone output
- Remote control for volume and source selection
- Solid 4mm anodised aluminium front panel
- CNC-machined solid beech outer case with luxury real wood veneers
- Innovative inverted PCB assembly for vibration and resonance control of the audio circuit
- Dimensions: 44 cm x 41.5 cm x 13 cm (w/d/h)
- Weight: 6.3 kgs (13.9 lbs)



‘DOUBLE SHOT’ GaN FET STEREO POWER AMPLIFIER

- 400 watts/8 ohms
- 1 x pair of RCA line-level inputs (single-ended)
- 1 x pair of XLR line-level inputs (fully balanced)
- ETI Research RCA connectors
- ETI Research speaker binding posts
- Solid 4mm anodised aluminium front panel
- CNC-machined solid beech outer case with luxury real wood veneers
- Innovative inverted PCB assembly for vibration and resonance control of the audio circuit
- Dimensions: 44 cm x 41.5 cm x 13 cm (w/d/h)
- Weight: 9.2 kgs (20.3 lbs)



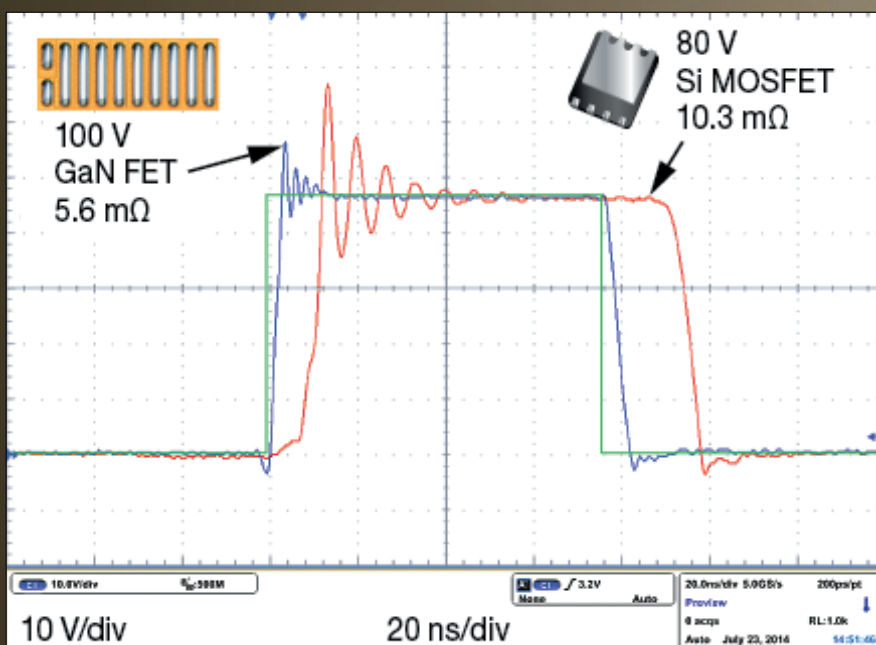
JAVA HI-FI

The JAVA Hi-Fi Technical Edge.

The JAVA Hi-Fi range of amplifiers are true game changers, employing breakthrough technologies and unique circuit designs to deliver unparalleled sound quality.

Our pre-amplifiers utilise Light Dependent Resistor (LDR) technology to isolate the signal path from other control electronics, providing the delicate audio signal with the shortest, cleanest possible path from input to output. With vanishingly low inter-modulation distortion (IMD) and total harmonic distortion (THD), the next-generation Gallium Nitride (GaN FET) amplifier modules at the heart of the new JAVA Hi-Fi stereo power amplifiers deliver a great leap forward in Class D sound.

These breakthrough technologies come together to stunning effect in the JAVA Hi-Fi range of integrated amplifiers. Here an LDR pre-amp stage is combined with GaN FET amplifier modules to create a match made in audio heaven and a level of sound quality that has to be heard to be believed.



GaN FET transistors (blue line) offer a switching waveform that is much closer to the theoretical ideal (green line) in comparison to current silicon-based alternatives such as MOSFETs (red line).

TECHNOLOGY





JAVA HI-FI

Designed for Life.

With JAVA Hi-Fi, audiophiles and music lovers don't have to choose between an exceptional listening experience or premium design. Now they can have both in one package. With Java Hi-Fi there is no compromise.

Referencing mid-century design and the golden analogue age of the 1950's - 1960's, the outer casework on all JAVA models is precision manufactured from solid beech, overlaid with luxury real wood veneers.

The casework of all JAVA Hi-Fi amplifiers is available in four different finishes, while the front panel is available in three different colours, enabling customers to perfectly tailor their amplifier to match their home décor.

CASEWORK FINISHES

The casework of all JAVA Hi-Fi models is available in four different finishes. Customers can also specify either a HIGH GLOSS or SATIN MATT finish.



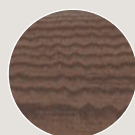
BLACK



EBONY



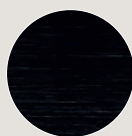
WHITE



WALNUT

FRONT PANEL FINISHES

The front panel of all JAVA Hi-Fi models is available in three different finishes:



BLACK



SILVER



COPPER

COLOUR OPTIONS





FOR FURTHER INFORMATION:

AUDIO PLUS
Tél: +31 (0)75 210 2020

WWW.AUDIOPLUS.NL